

# Introduction to



# VesselsValue

Validated market perspective  
for a more transparent trade

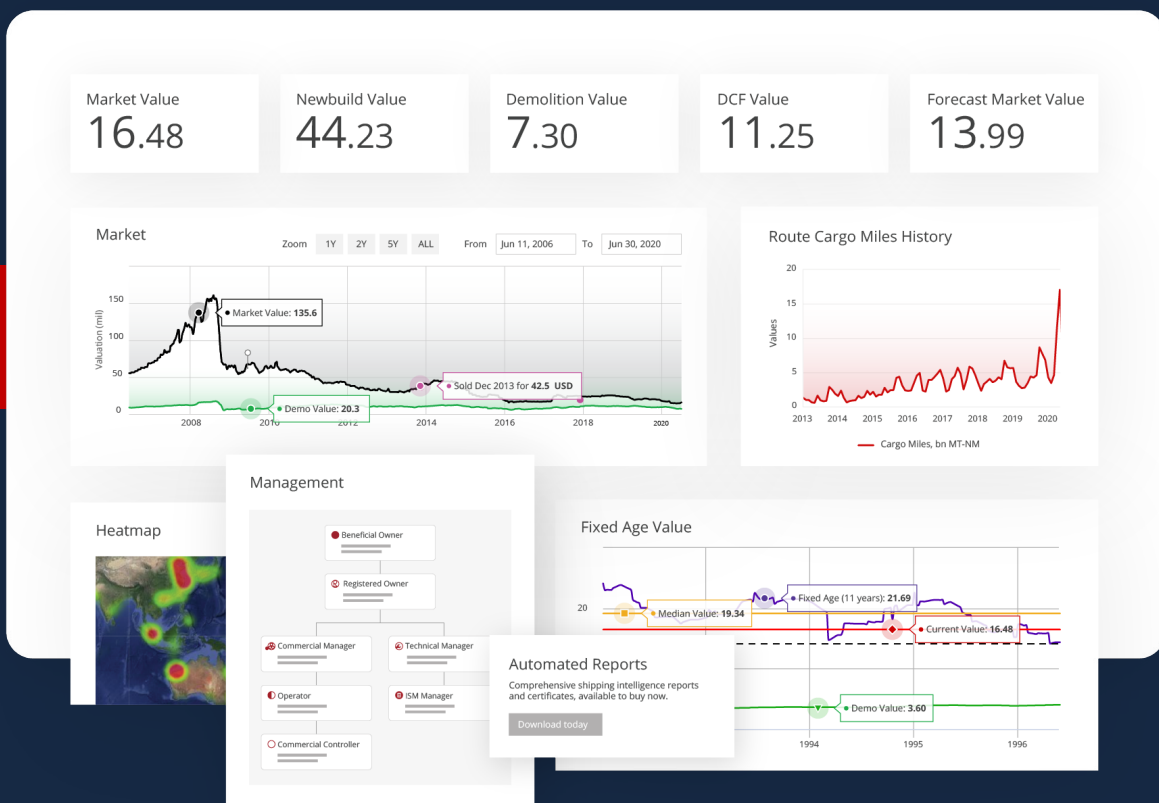
**VESON**  
NAUTICAL



# Create your decision advantage

Making market-leading decisions requires validated, usable, and timely data. VesselsValue delivers daily, unbiased maritime values and data for the world's fleet, enabling informational immediacy and supporting market transparency.

As the industry's most trusted source for maritime market intelligence, VesselsValue's solutions are known and loved by diverse stakeholders for their proprietary validation approach, comprehensive coverage, convenient online access, and flexible API feeds.







We cover over **74,000** individual assets across the following sectors:

- |         |            |               |                   |             |
|---------|------------|---------------|-------------------|-------------|
| Bulkers | Containers | Small Tankers | RoRos             | Floater Wet |
| Tankers | Offshore   | Small Dry     | Vehicle Carriers  | Passenger   |
|         | LNG & LPG  | Reefers       | Specialised Cargo |             |





# Our Services



## Value

We know how volatile and unpredictable the maritime market can be. That's why our values are updated daily, driven by algorithms and leverage the latest market transactions, negotiations, and intelligence.



## Database

Our comprehensive technical and commercial databases contain extensive information for over 74,000 vessels, 15,000 companies and 100,000 transactions. See the transactions live as they happen, search and compare specifications of individual vessels and build your own queries.



## Green

Our Green product range includes tools for monitoring the Energy Efficiency of vessels and their compliance with International Maritime Organization (IMO) regulations. You can search vessels by Green specifications, monitor Offshore and Renewable projects, and track vessel activity in Emission Control Areas.

Energy Efficiency ratings include: Energy Efficiency Design Index (EEDI), Energy Efficiency Existing Ship Index (EEXI), and Carbon Intensity Indicator (CII).

## A snapshot of our clients







## Values

Daily updated current and historical values for vessels, company fleets and portfolios.

View and compare across five different asset values:

### Market

What a vessel can be bought or sold for in the market.

### Forecast

Predictions of the future market values of a vessel until the end of its economic life.

### DCF

The estimated long term value of a vessel calculated as the discounted cash flow of it projected revenues and costs.

### Newbuilding

The cost to replace a vessel with a newbuild ship of equivalent specifications.

### Demolition

What a vessel can be sold for in the scrap market.



## Databases

**Vessel specifications** – 200 data fields covering the global shipping fleet, including basic and premium fields.

**Commercial transactions** – Current and historical charter and asset transactions with spot and period charters and newbuild, secondhand, and demolition transactions.

**Ownership** – Current and historical ownership with fields such as beneficial owner, registered owner, operator, commercial manager, commercial controller, technical manager and ism manager.

**ESG** – EEXI/EEDI ratings, carbon dioxide emissions, and CII ratings estimated from AIS movement and engine specification data.

Q Add new search condition				Hide List
Vessel type	BULKER	ALL TANKER	ALL AFRAMAX	ALL AFRAMAX TNKR
Built	SMALL DRY	VLCC	AFRAMAX TNKR	AFRAMAX SHUTTLE TNKR
Sizes	CONTAINER	SUEZMAX	LR2 TNKR	
Vessel	TANKER	AFRAMAX		
Features	LNG	POST PANAMAX MT		
Company	LPG	PANAMAX MT		
Green	MULTIGAS	HANDY TANKER		
Engine	CO2	SMALL TANKER		
Other	FLOATER GAS			

Vessels		Size	Build year	Vessel age	Builder	Beneficial Owner
<input type="checkbox"/>	REEFER	112,100 DWT	2009	14.79	Daewoo	Colson Navigation
<input type="checkbox"/>	SPECIALISED CARGO	105,100 DWT	2009	14.53	Hyundai Heavy Ind. Co.	FLPDC
<input type="checkbox"/>	OFFSHORE PRODUCTION	107,500 DWT	2010	13.85	Hyundai Heavy Ind. Co.	Hyundai Heavy Ind. Co.
<input type="checkbox"/>	FLOATER WET	104,500 DWT	2009	15.36	Hyundai Heavy Ind. Co.	Daewoo
<input type="checkbox"/>	MODU	104,500 DWT	2009	15.38	Hyundai Heavy Ind. Co.	Daewoo
<input type="checkbox"/>	OTV	104,500 DWT	2008	15.84	Hyundai Heavy Ind. Co.	Daewoo
<input type="checkbox"/>	AFRAMAX TANKER	113,700 DWT	2020	3.88	Daewoo	Daewoo
<input type="checkbox"/>	AFRAMAX TANKER	113,800 DWT	2019	4.50	Daewoo	Daewoo
<input type="checkbox"/>	AFRAMAX TANKER	106,800 DWT	2020	3.54	Daewoo	Daewoo
<input type="checkbox"/>	AFRAMAX TANKER	105,900 DWT	2021	3.39	Daewoo	Daewoo
<input type="checkbox"/>	AFRAMAX TANKER	113,600 DWT	2020	4.17	Daewoo	Daewoo
<input type="checkbox"/>	AFRAMAX TANKER	110,000 DWT	2016	8.12	Daewoo	Daewoo
<input type="checkbox"/>	AFRAMAX TANKER	113,000 DWT	2022	1.98	Daewoo	Daewoo
<input type="checkbox"/>	AFRAMAX TANKER	112,100 DWT	2023	1.37	Daewoo	Daewoo
<input type="checkbox"/>	AFRAMAX TANKER	110,000 DWT	2008	16.01	Daewoo	Daewoo
<input type="checkbox"/>	AFRAMAX TANKER	105,200 DWT	2011	12.92	Daewoo	Daewoo
<input type="checkbox"/>	AFRAMAX TANKER	104,000 DWT	2011	13.18	Daewoo	Daewoo
<input type="checkbox"/>	AFRAMAX TANKER	105,000 DWT	2009	14.91	Daewoo	Daewoo
<input type="checkbox"/>	AFRAMAX TANKER	104,000 DWT	2009	14.91	Daewoo	Daewoo



# Green

Our Energy Efficiency services combine VesselsValue's extensive Shipping data with the International Maritime Organization (IMO) framework to estimate Energy Efficiency ratings for individual vessels. We offer two product packages:

## EEDI / EEXI

Ratings include Energy Efficiency Design Index (EEDI) and Energy Efficiency Existing Ship Index (EEXI) for Bulk, Tankers, Reefers and Containers.

## CII

Ratings include Carbon Intensity Indicator (CII) for Bulk, Tankers, Reefers, Container, Cruise, Gas, Vehicle Carriers, Small Dry and Small Tankers.

With Green you can:

- Obtain rapid estimations of energy efficiency ratings
- Monitor vessel and fleet compliance
- View, search and compare ratings at a vessel and fleet level
- Access data driven results in real time
- Export vessel ratings and additional details



## Data delivered



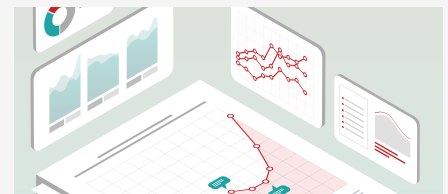
### ONLINE ACCESS

Get online access to the VesselsValue platform with a subscription for you and your team.



### API DATA FEEDS

Designed to work seamlessly with your existing systems or applications, our data can be delivered through an API feed.



### REPORTS

Choose from a selection of ready made reports or get in touch to discuss your requirements for a bespoke report.

Ready to see the platform in action?  
Schedule a demo at [vesselsvalue.com/register](https://vesselsvalue.com/register)